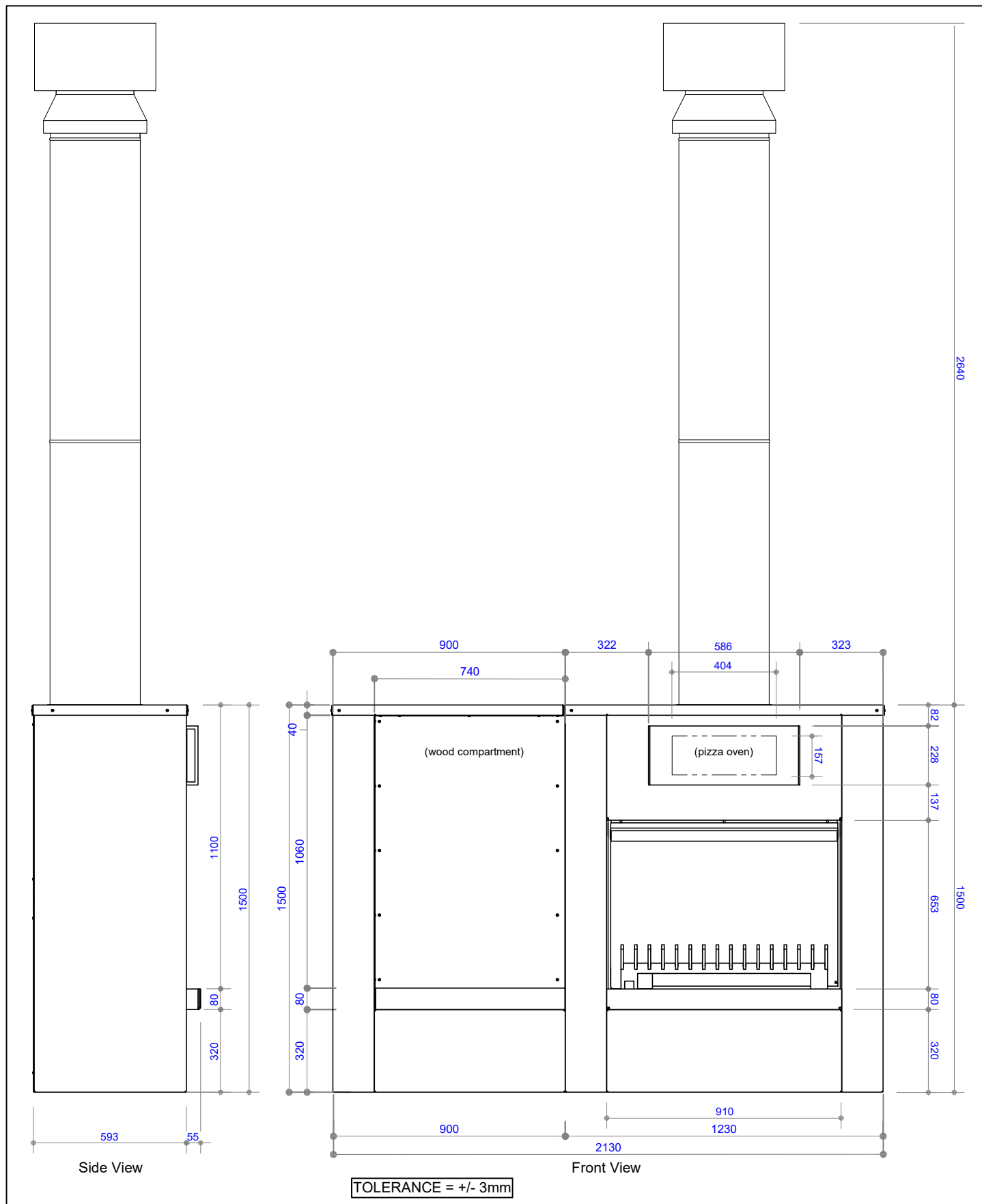
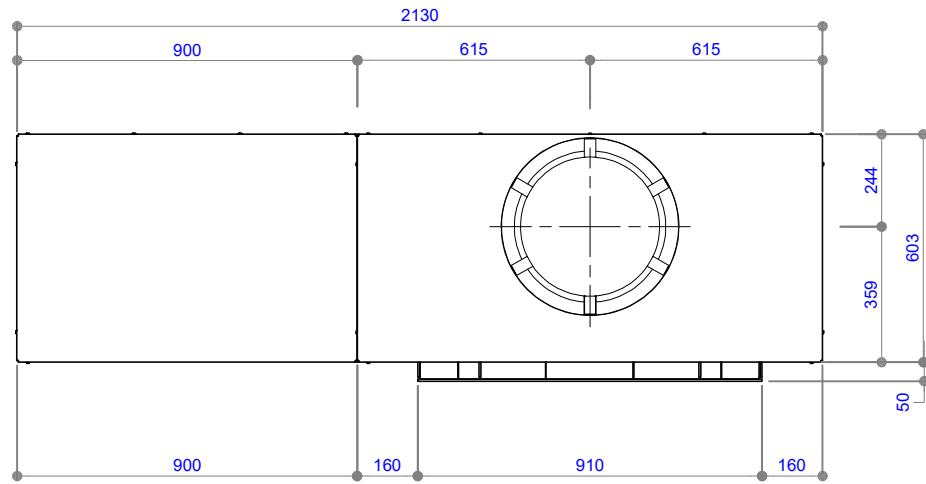




WD52 SPECIFICATIONS

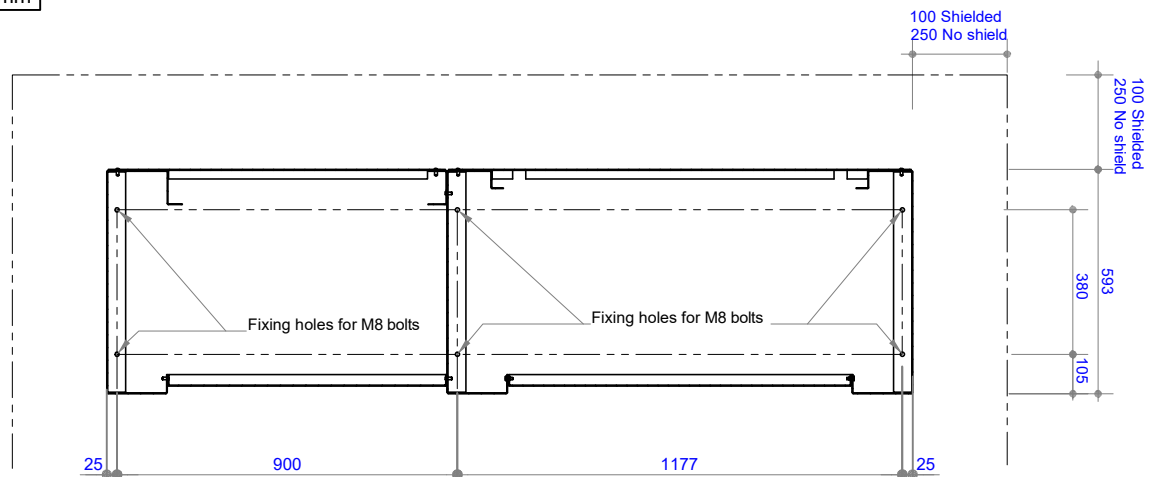


COPYRIGHT© THIS DRAWING IS THE PROPERTY OF The Fire Dept.	Client: THE FIRE DEPT.				<div>THE FIRE DEPT.</div> <div>HAND CRAFTED FIRES</div>					
	Product: WD52 - 1200									
	Title: FIREPLACE DIMENSIONS									
	Drawn: LB		Date: 21/04/2021							
	Chkd: JS		Date: 21/04/2021							
	Appd: JW		Date: 21/04/2021							
		Scale:		on A4						
Drawing No.		WD52-1200-901				Sheet 01 of 06		Revision 1		

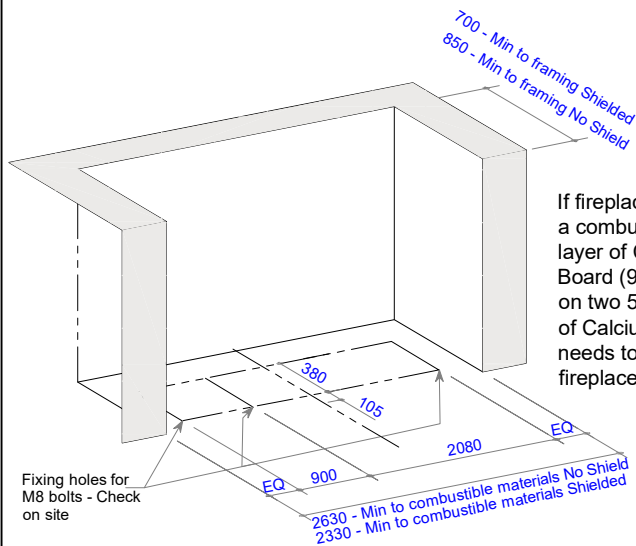


TOLERANCE = +/- 3mm

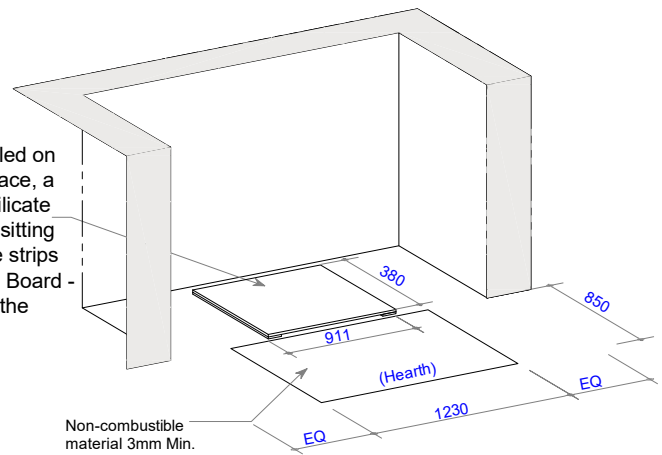
Plan View



Fixing Set-out - Plan View



If fireplace is installed on a combustible surface, a layer of Calcium Silicate Board (9mm Min), sitting on two 50mm wide strips of Calcium Silicate Board - needs to sit under the fireplace.



Non-combustible material 3mm Min.

NOTE: Confirm fixing holes and access on site prior to drilling.
Fireplace to be 250mm /100mm (shielded) clear of combustible materials.

NOTE: Hearth does not need extend past the sides of the fireplace opening, but needs to extend 850mm from front of fire opening.

COPYRIGHT©
THIS DRAWING IS THE PROPERTY
OF The Fire Dept.

Client: THE FIRE DEPT.

Product: WD52 - 1200

Title: CAVITY CLEARANCES

Drawn: LB

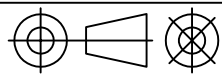
Date: 21/04/2021

Chkd: JS

Date: 21/04/2021

Appd: JW

Date: 21/04/2021



Scale: on A4

THE
**FIRE
DEPT.**
HAND CRAFTED FIRES

Drawing No.

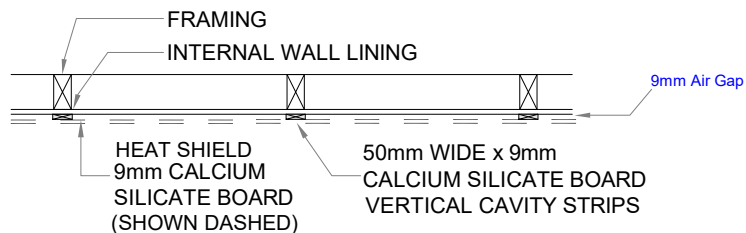
WD52-1200-902

Sheet 02 of 06

Revision

1

Note: Reduced clearances are measured from the outer face to the fireplace to the Calcium Silicate Board
Ventilation air gaps at the top and bottom of the Heat Shield must be provided and must not be closed or blocked off.

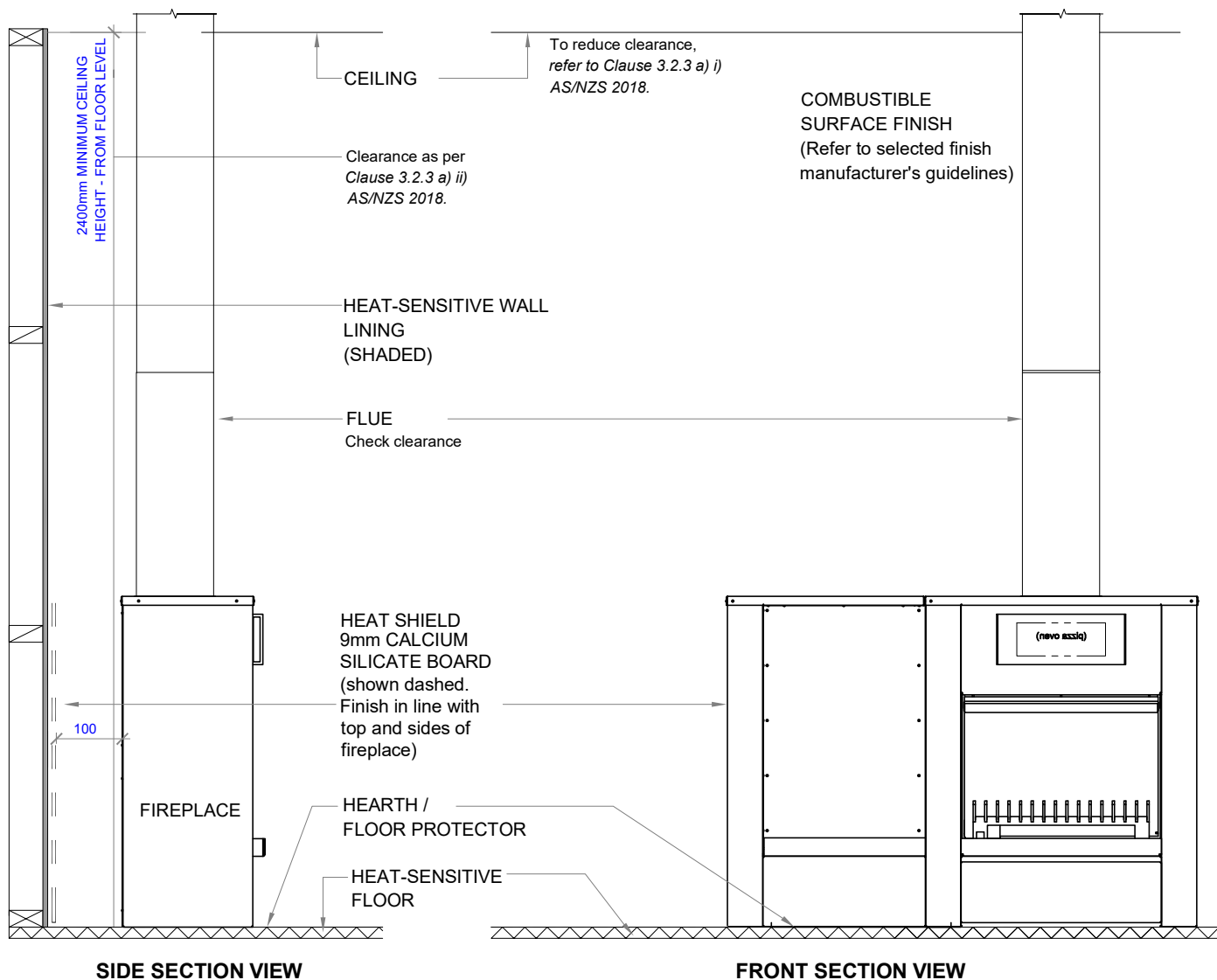


NOTES:
NO NOTCHING HEAT SHIELD PANELS

FIXING:

- EDGE FIXING DISTANCE 12mm.
 - CORNER FIXING DISTANCE 50mm
 - ACHIEVE 200mm CENTRE FIXINGS TO ALL FRAMING.
- JOINTS:**
- 2mm BUTT JOINT PANELS

Heat Shield requirements to reduce clearances.
Refer Sheet 2 - 'Shielded' measurements



COPYRIGHT©
THIS DRAWING IS THE PROPERTY
OF The Fire Dept.

Client: THE FIRE DEPT.

Product: WD52-1200

Title: REQUIREMENTS TO REDUCE CLEARANCES

Drawn: LB

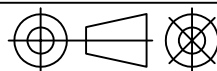
Date: 21/04/2021

Chkd: JS

Date: 21/04/2021

Appd: JW

Date: 21/04/2021



Scale:

THE FIRE DEPT.
HAND CRAFTED FIRES

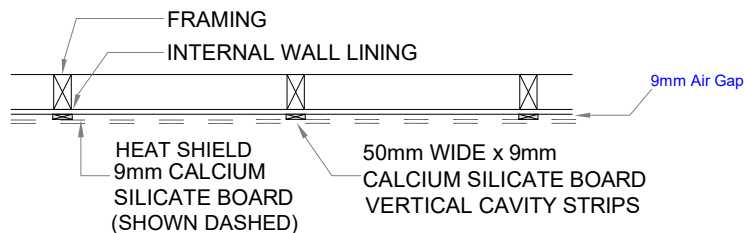
Drawing No. **WD52-1200-903**

Sheet 03 of 06

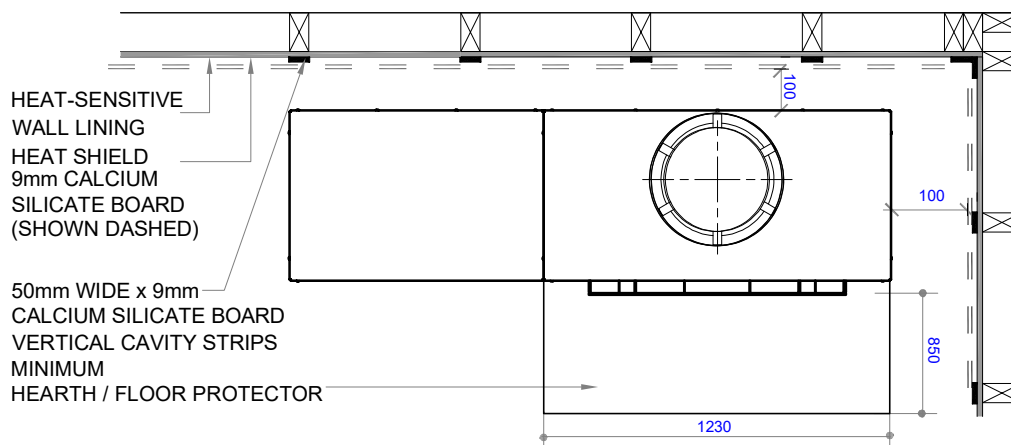
Revision

1

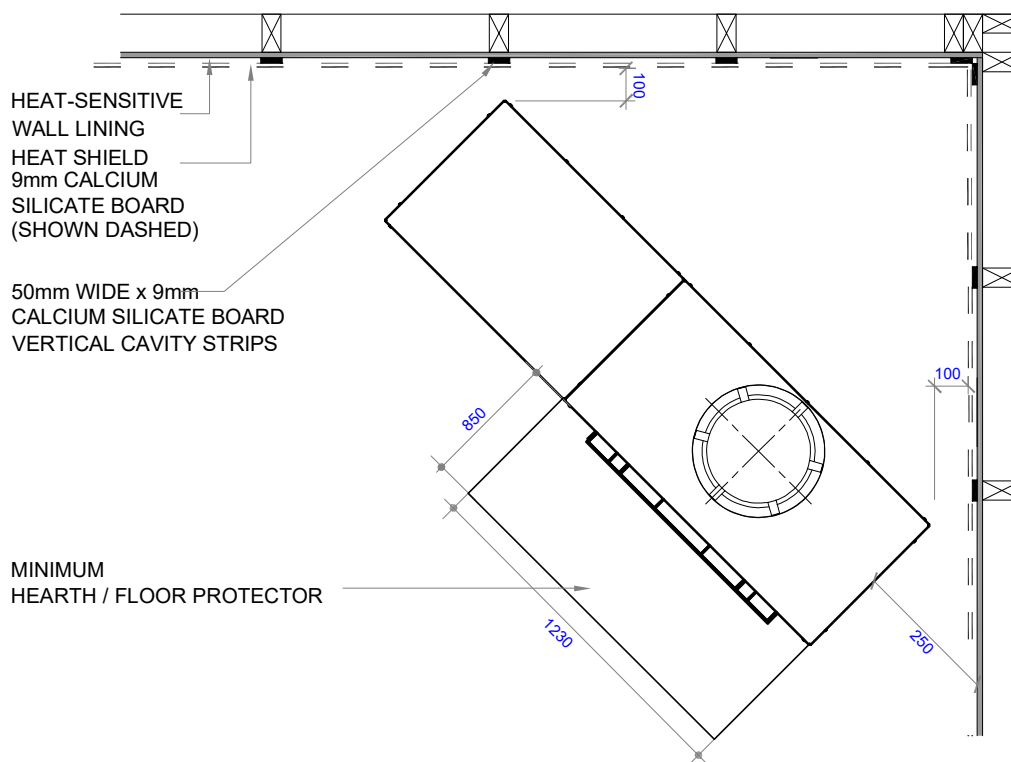
NOTES:
NO NOTCHING HEAT SHIELD PANELS
 FIXING:
 - EDGE FIXING DISTANCE 12mm.
 - CORNER FIXING DISTANCE 50mm
 - ACHIEVE 200mm CENTRE FIXINGS TO ALL FRAMING.
 JOINTS:
 - 2mm BUTT JOINT PANELS



Heat Shield requirements to reduce clearances. Refer Sheet 2 - 'Shielded' measurements

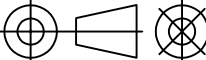


PARALLEL TO WALL INSTALL PLAN

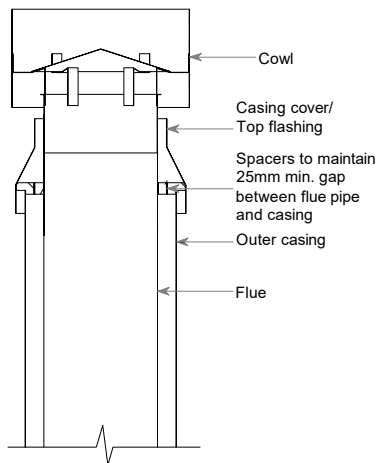


CORNER INSTALL PLAN

COPYRIGHT©
THIS DRAWING IS THE PROPERTY
OF The Fire Dept.

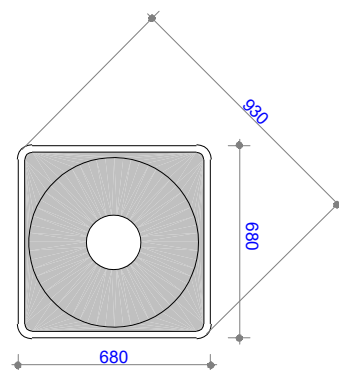
Client: THE FIRE DEPT.			
Product: WD52-1200			
Title: REQUIREMENTS TO REDUCE CLEARANCES			
Drawn: LB		Date: 21/04/2021	
Chkd: JS		Date: 21/04/2021	
Appd: JW		Date: 21/04/2021	
		Scale:	
Drawing No.	WD52-1200-904		Sheet

THE FIRE DEPT.
HAND CRAFTED FIRES



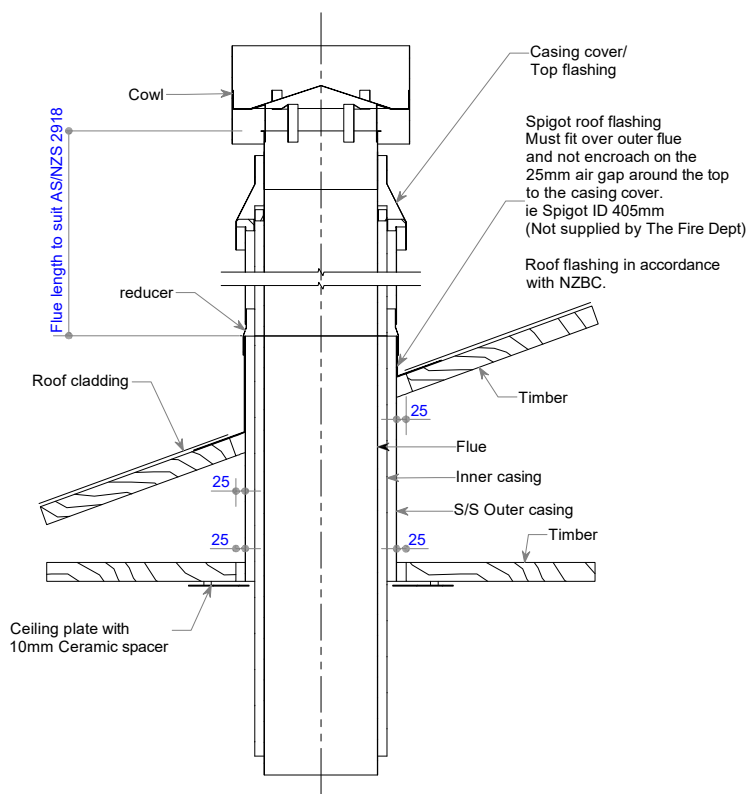
Flue components:
300mm dia. Flue
350mm dia. S/S Outer casing

NOTE:
Flue components must be installed to AS/NZS2918:2001 requirements.
All external penetration flashings must be installed in accordance with NZBC.
Cavity airflow must be unobstructed from fire box to flue termination.
75mm clearance between flue and combustible materials.
125mm clearance between flue and wiring / plastic water pipes.
Each flue joint must be sealed with a heat proof sealer.
Each flue joint must have a minimum of 4 x Stainless Steel rivets.

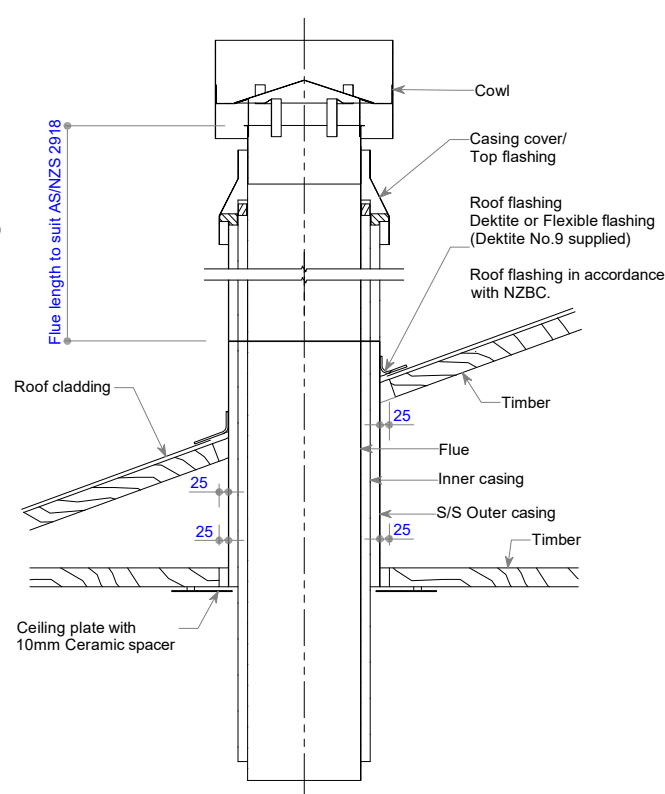


Dektite Flashing No. 9 - Plan View

**Option 1 - Free standing fireplace flue detail -
Air Ventilation through Casing cover / Top flashing**



**Option 2 - Roof penetration flue detail - (Spigot)
Air Ventilation through Casing cover / Top flashing**



**Option 3 - Roof penetration flue detail - (Dektite / Flashing)
Air Ventilation through Casing cover / Top flashing**

Flue components:
300mm dia. Flue
350mm dia. Inner casing
400mm dia. S/S Outer casing
410mm dia ID to 395mm dia OD reducer

NOTE:
Flue components must be installed to AS/NZS2918:2001 requirements.
All external penetration flashings must be installed in accordance with NZBC.
Cavity airflow must be unobstructed from fire box to flue termination.
25mm clearance between flue and combustible materials.
75mm clearance between flue and wiring / plastic water pipes.
Each flue joint must be sealed with a heat proof sealer.
Each flue joint must have a minimum of 4 x Stainless Steel rivets.
Flue to be adequately supported at 2m crs.
Roof Penetrations: Flue pipe to extend not less than 4.6mm above the top of the floor protector, excluding cowl height.

Flue components:
300mm dia. Flue
350mm dia. Inner casing
400mm dia. S/S Outer casing
Dektite No.9 (supplied by others)

COPYRIGHT©
THIS DRAWING IS THE PROPERTY
OF The Fire Dept.

Client: THE FIRE DEPT.

Product: WD52-1200

Title: FLUE EXIT DETAILS

Drawn: LB

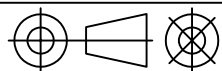
Date: 21/04/2021

Chkd: JS

Date: 21/04/2021

Appd: JW

Date: 21/04/2021



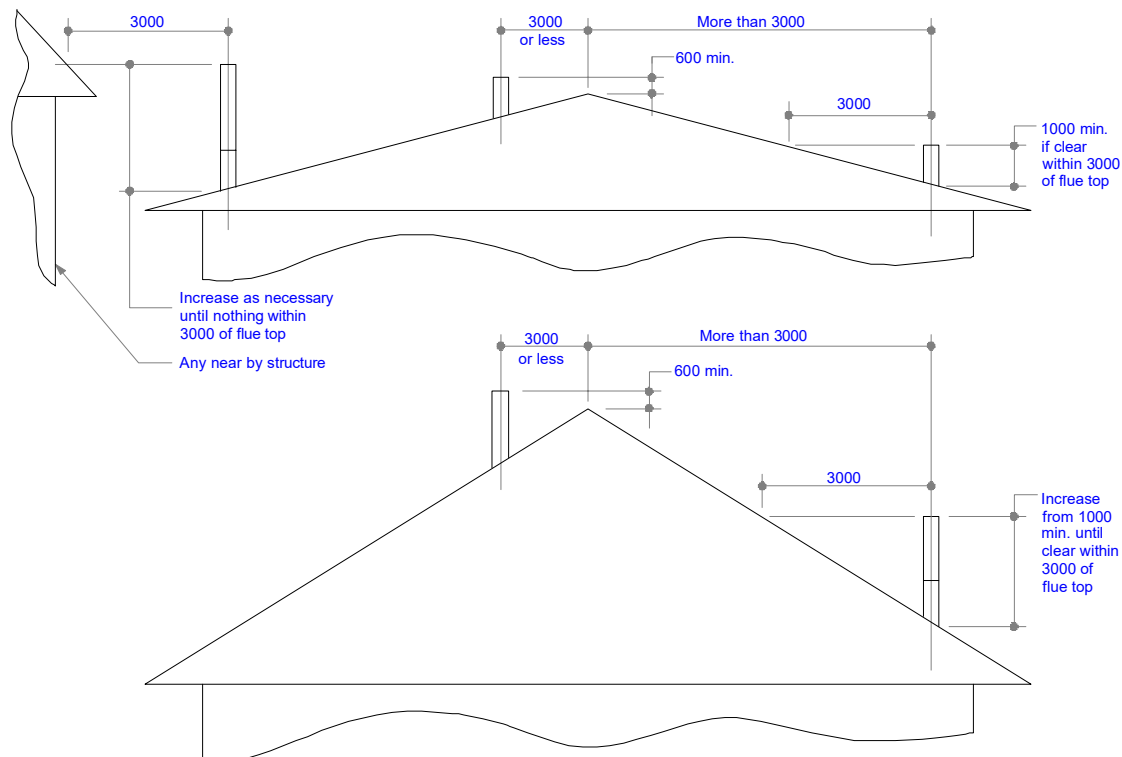
Scale: on A4

**THE FIRE
DEPT.**
HAND CRAFTED FIRES

Drawing No. **WD52-1200-905**

Sheet 05 of 06

Revision **1**



Minimum Height of Flue System Exit
Or as per AS/NZS 2918:2001

Note - Roof Penetrations: Flue pipe to extend not less than 4.6mm above the top of the floor protector, excluding cowl height.

COPYRIGHT©
THIS DRAWING IS THE PROPERTY
OF The Fire Dept.

Client: THE FIRE DEPT.

Product: WD52-1200

Title: VERTICAL FLUE EXIT DETAILS

Drawn: LB

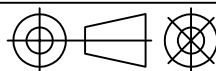
Date: 21/04/2021

Chkd: JS

Date: 21/04/2021

Appd: JW

Date: 21/04/2021



Scale: on A4

THE FIRE DEPT.
HAND CRAFTED FIRES

Drawing No. **WD52-1200-906**

Sheet 06 of 06

Revision

1